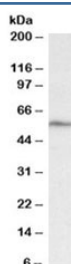


## Glp1r Antibody [Glucagon-like peptide 1 receptor] (R35944)

Catalog No.	Formulation	Size
R35944-100UG	0.5 mg/ml in 1X TBS, pH7.3, with 0.5% BSA (US sourced) and 0.02% sodium azide	100 ug

[Bulk quote request](#)

Availability	1-3 business days
Species Reactivity	Mouse
Format	Antigen affinity purified
Clonality	Polyclonal (goat origin)
Isotype	Goat Ig
Purity	Antigen affinity
Gene ID	14652
Applications	Western Blot : 1-3ug/ml ELISA (peptide) LOD : 1:128000
Limitations	This Glp1r antibody is available for research use only.



Western blot testing of mouse heart lysate with Glp1r antibody at 1ug/ml. Predicted molecular weight ~53kDa.

### Description

Additional name(s) for this target protein: Glucagon-like peptide 1 receptor, GLP-1R, GLP1Rc, GLP-1 receptor, GLP-1-R

### Application Notes

Optimal dilution of the Glp1r antibody should be determined by the researcher.

### Immunogen

Amino acids SKRGERNFPEEQ were used as the immunogen for this Glp1r antibody. The amino acid sequence used as

immunogen is from the extracellular portion of the protein.

## **Storage**

Aliquot and store the Glp1r antibody at -20oC.